

# Photography

## camera angles

Photojournalism combines so many elements at the time photographs are taken for a layout. The photographer should go into a story environment with some awareness of what the layout will look like when it is completed. The amount of space to be occupied by photos, the size and shape of photos, the right or left page, a grouping that tells a story, etc. are just some ideas that should be going on in the photographer's mind as the images are being captured.

In addition, the photographer should give consideration to the actual camera angle that is being used relative to the subject when the picture is taken. Most of the time, students simply hold the camera up to their eye level as they are standing and take the photograph. In the photographs that illustrate this story, we deliberately concentrated on varying the camera angle in such a way that the images would be more dramatic. You can be the final judge as to what angle impresses you the most.

With Photo (1.), the photographer remained standing, zoomed in just a little, and looked down on the subject. This angle is often a great way to eliminate distracting backgrounds in a photograph. However, the subject tends to lose some dominance. The repeating lines of the steps tend to direct the viewer to the subject. The girl has been placed to the right of the space so as to employ the rule of thirds composition guideline. The image is captured as a candid image rather than having the girl looking at the camera.

With Photo (2.), the photographer has gone to a wide angle lens which increases the depth of field and exaggerates perspective much more. That is to say, objects close to the camera appear disproportionately larger than those further away. Consequently, the steps really loom out in the foreground and the lines lead the viewer's eye to the girl more than in Photo (1.). More of the school courtyard becomes apparent. The photo could act as a larger dominant image in a layout with other supporting photographs surprinted over the space to the left of the girl. Notice how in Photo (1.), the coat on the steps was eliminated with Photoshop. This is a small detail but the removal eliminates what might otherwise be seen as a small distraction. Sometimes taking a few minutes at the beginning of a photo session to clean up the environment can really save time working with Photoshop later. It just takes a second to clean up pop cans, trash, etc. As an extra bonus, you are doing your part to keep the grounds clean.

In Photo (3.) it is obvious that the photographer went to a very low angle. Part of the reason for this was to capture the beautiful autumn colors that were present at that time of the year. The girl was aware of the photograph being taken but was asked to continue with what she was doing and to ignore the photographer. This candid image is much more dramatic than if she had been smiling for the camera. Notice also how the camera was tilted to introduce some dramatic angles into the photo. The tree and school angle through the image at about 45 degrees. The photographer was careful to minimize mergers that could be created by branches going through the girl's head. Holding cameras at a diagonal provide one way to introduce strong lines into an image. Just don't overdo this as it can become boring if used in excess. Notice how the girl's head is in the upper left of the photograph to make use of the rule of thirds. Including the hands and camera gives credibility to the photo and the shoulder-elbow-hands form a beautiful triangle.

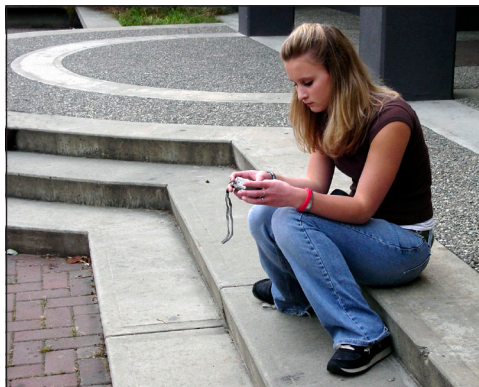


Photo (1.)



Photo (2.)

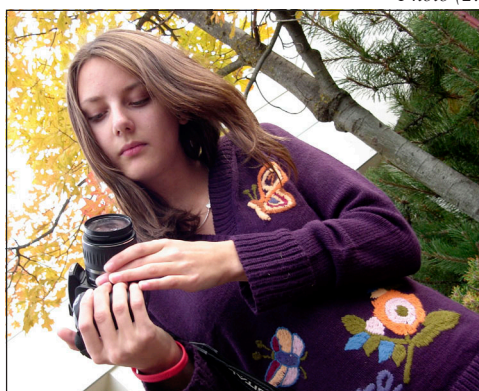


Photo (3.)